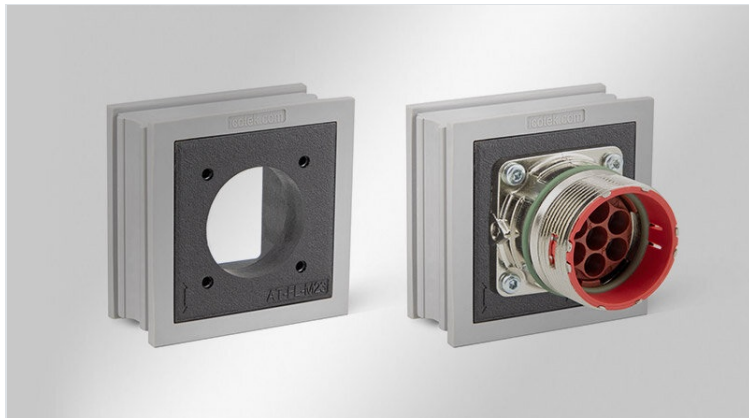


AT-FL adapter grommets

based on KT large, for M23 square flange / IP65



The grommet AT-FL is constructed on the basis of a large KT cable grommet. The polyamide body is moulded with elastomer. All square flanges with dimensions 19.8 x 19.8 mm (M23) can be integrated.

The insertion of AT-FL into an icotek cable entry frame enables the routing of cables with and without connectors in combination with the creation of interfaces for M23 connectors within one cable entry system. Separate cut-outs for connectors are no longer necessary.

AT-FL provides ingress protection of up to IP65 (depending on the used flange and connector).

IP54

IP55

IP64

IP65

RIWA

HL3
EN 45545-2

ECOLAB
certified

UV
ISO 4892-2A

RoHS
compliant

REACH
COMPLIANCE

Made in
Germany

Specifications

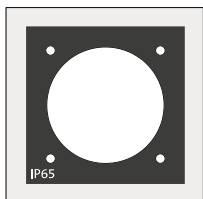
IP rating (EN 60529)	IP54, IP55, IP64, IP65
Material	Elastomer Body: Polyamide
Flame class	UL94-V0, self-extinguishing
Operating temperature	-40 C° to 90 C°
Properties	silicone free, halogen free

Advantages & Benefits

- By utilising the AT-FL grommet, connectors can be integrated directly into the cable entry frame
- Separate cut-outs for connectors are no longer necessary
- Space-saving solution
- Cost-saving assembly

Product Types & Sizes

AT-FL-M23



Part No.	39965
EAN	4251269323768
Package quantity	5
Length	42 mm
Width	41,5 mm
Height	19 mm
Mounting height	2 mm

icotek[®]
smart cable management